

1st PANHELLENIC INTERDISCIPLINARY CONGRESS
ON PEDIATRIC AND ADOLESCENT MULTIPLE SCLEROSIS

«Dialogues of Hellenic Neuroscientists
on Pediatric and Adolescent
Multiple Sclerosis»

16-18
January
2015

ROYAL OLYMPIC
HOTEL
ATHENS



Organization:

George Chroussos
Professor of Pediatrics
National and Kapodistrian University of Athens

Maria Anagnostouli
Assistant Professor of Neurology
National and Kapodistrian University of Athens

Under the auspice of:
Medical School of Athens

Academy of Neurosciences

10
CME - CPD
credits
will be
provided

FINAL
PROGRAMME



INVITATION OF THE PRESIDENTS OF SCIENTIFIC AND ORGANIZING COMMITTEE

Dear colleagues, dear students,

Multiple Sclerosis is a disease that affects people of all ages but especially young people. A small percentage of all patients concerns individuals in childhood and adolescence, at about 3-5%, but with the apparent increasing incidence of the disease internationally in recent years raises the dire need to focus our attention in this category of patients, which we believe that it is the more delicate.

As much as pediatricians and pediatric neurologists who first encounter these cases of MS patients and neurologists who eventually undertake in later ages the management and further treatment of them, often express the need for exchange point of view, concerning the plurality of questions arising from the characteristics, both of the sensitive age, and from the transitivity of puberty and the consequent hormonal changes.

But other colleagues of other specialties are confronted with the range of manifestations of the disease, such as ophthalmologists, psychiatrists, neuroimaging radiologists and rheumatologists. The latter are often asked to submit their views on the correct differential diagnosis of these cases. Of course researchers and clinicians of all fields, biologists, psychologists, nurses also have to offer to improve the quality of life of these children.

Note that since 2013 the International Pediatric Multiple Sclerosis Study Group (IPMSSG) is working globally, but already several years ago, Professor of Neurology at the AUTH Mr. Orogas with his proposal sensitized the Multiple Sclerosis International Federation (MSIF) for the need to target and strengthen research efforts in the field of childhood MS.

With the belief that this scientific meeting opens new avenues of approach and interdisciplinary cooperation of relevant disciplines, to focus and optimization of treatment of these children, we invite you to honor us with your presence and your active participation, to always welcoming and panoramic views of the Acropolis, site of Royal Olympic, Athens!

Waiting for you!

Sincerely

George Chrousos
Professor of Pediatrics

Maria Anagnostouli
Assistant Professor of Neurology

Medical School of National and Kapodistrian University



COMMITTEES

PRESIDENT OF THE SCIENTIFIC COMMITTEE

Chrousos George

PRESIDENT OF THE ORGANIZING COMMITTEE

Anagnostouli Maria

SCIENTIFIC COMMITTEE

Dalakas Marinos
Kappos Ludwig
Karussis Dimitrios
Stefanis Leonidas
Orologas Anastasios
Theoharides Theoharis
Youroukos Sotirios
Toulas Panagiotis
Moschos Marilita
Banwell Brenda
Chintis Tanujia
Ghezzi Angelo

ORGANIZING COMMITTEE

Konitsiotis Spyros
Papavasiliou Antigone
Katsarou Efi
Mastroianni Sotiria
Ntinopoulos Argyrios
Pons Rozer
Vartzelis George
Gika Artemis
Tsitsami Helen

HONORARY COMMITTEE

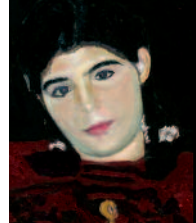
Papadimitriou Alexandros
Papathanasopoulos Panagiotis
Kyritsis Athanasios
Piperidou Charitomeni
Hadjigeorgiou George
Amiridis George
Heliopoulos Ioannis
Papageorgiou Charalambos
Spengos Konstantinos

Kilidireas Constantinos
Voumvourakis Constantinos
Grigoriadis Nikolaos
Nikolaou Chrysoula
Triantafyllou Nikolaos
Kapaki Elisabeth
Deretzi Georgia
Pelidou Erietta

SCIENTIFIC PROGRAMME

FRIDAY 16 of JANUARY 2015

14.00pm – 15.00pm	Registrations
15.00pm – 16.00pm	Welcome - Addresses
16.00pm – 18.00pm	Round Table <i>Chair: Orologas A., Katsarou E.</i>
16.00pm – 16.30pm	<u>Anagnostouli M.</u> “Basic knowledge of the pathophysiology of MS Newer data”
16.30pm – 17.00pm	<u>Ntinopoulos A.</u> “Newer epidemiological and patho-physiology data on childhood and adolescent MS in Greece and internationally”
17.00pm – 17.30pm	<u>Pons R.</u> “Devic’s disease in childhood and adolescence. Data on pathophysiology, diagnosis, differential diagnosis and treatment”
17.30pm – 18.00pm	<u>Mastroianni S.</u> “The experience of children with MS in Pediatric Hospital. Peculiarities in medical care and in family, school and social adjustment”
18.00pm – 18.30pm	Coffee Break
18.30pm – 19.30pm	Satellite Symposium- Merk-Serono
19.30pm - 20.30pm	Honorary Inaugural Speech <i>Chair: Chrousos G., Anagnostouli M.</i> <u>Papatzikis E.</u> “Approaching Sound and Music as an Interdisciplinary Tool in Neuroscience Research against the Early Onset Multiple Sclerosis: Truths and Misunderstandings”
20.30pm – 21.30pm	Opening Ceremony

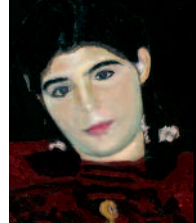


SATURDAY 17 of JANUARY 2015

9.30am - 11.00am	Diagnosis – Differential Diagnosis 1 <i>Chair: Stefanis L., Papavasiliou A.</i>
9.30am – 10.00am	<u>Gika A.</u> “ADEM, & childhood/adolescence MS. Differential Diagnosis ”
10.00am – 10.30am	<u>Vartzelis G.</u> “Autoimmune encephalitis and other encephalopathies & childhood/adolescence MS. Differential Diagnosis”
10.30am – 11.00am	<u>Tsitsami H.</u> “ Neuromuscular manifestations of rheumatic diseases of childhood mimicking multiple sclerosis”
11.00am – 11.30am	Coffee Break
11.30am - 12.30pm	Satellite Symposium-Sanofi-Genzyme
12.30pm – 13.00pm	Coffee Break
13.00pm – 14.00pm	Diagnosis – Differential Diagnosis 2 <i>Chair: Konitsiotis S., Mitsikostas D.</i>
13.00pm – 13.30pm	<u>Moschos M.</u> “Optic Neuritis in children and adults with MS and other demyelinating diseases. Similarities and differences”
13.30pm – 14.00pm	<u>Toulas P.</u> “Conventional and non-conventional neuro-imaging in the differential diagnosis of MS in children and adolescents ”
14:00pm - 15:00pm	Satellite Symposium-Genesis Pharma
15.00pm – 17.00pm	Lunch Break
17.00pm -18.30pm	Therapies in childhood/adolescent MS <i>Chair: Dalakas M., Youroukos S.</i>
17.00pm– 17.30pm	<u>Chitnis T.</u> “First and second line therapies in pediatric MS. New insights”
17.30pm - -18.00pm	<u>Banwell B.</u> “International Pediatric MS Study Group. Current and future perspectives”
18.00pm – 18.30pm	<u>Ghezzi A.</u> “New drugs and new hopes for Pediatric MS. Ongoing protocols”
18.30pm – 19.00pm	Coffee Break
19.00pm – 20.00pm	State of the Art Lectures <i>Chair: Chrousos G., Kappos L.</i> <u>Dalakas M.</u> “New era of MS therapeutics. The role of B Cells and beyond” <u>Kappos L.</u> “A role for S1P modulation in a primarily degenerative hereditary disease? Rationale and design of a Phase I study in Rett Syndrome”
20.30pm – 21.30pm	AWARDS

SUNDAY 18 of JANUARY 2015

10.00am – 11.00am	Positions and Oppositions in Approach of Child and Adolescent MS - Special Topics <i>Chair: Anagnostouli M., Fakas N.</i>
10.00am – 10.20am	<u>Katsavos S.</u> “The HLA system, the vitamin D and its potential therapeutic role in childhood / adolescence MS ”
10.20am – 10.40am	<u>Artemiadis A.</u> “Electrophysiological and neuroimaging evaluation of cognitive functions in patients with MS. Suggestions for child and adolescent MS”
10.40am – 11.00am	<u>Christidi F.</u> “Detection and treatment of cognitive dysfunctions in children and adolescents with multiple sclerosis: neuropsychological approach“
11.00am -11.30am	Coffee Break
11.30am – 13.00pm	State of the Art Lectures <i>Chair: Papadimitriou A., Orologas A.</i>
11.30am – 12.00pm	<u>Chrousos G.</u> “Stress and MS. The specificities of childhood and adolescence ”
12.00pm – 12.30pm	<u>Theoharides T.</u> “Autism, Rett syndrome and MS-molecular similarities and differences”
12.30pm – 13.00pm	<u>Karussis D.</u> “Stem cells application in neurological diseases; Implications for childhood MS”
13.00pm – 14.00pm	Presentation of childhood and adolescence MS cases Conversation on the therapeutic intervention
14.00pm- 14.30pm	Conclusions - Discussion
15.00	End of the Congress



SPEAKERS - CHAIRMEN

(in alphabetical order)

Banwell Brenda	MD, Division Chief, Neurology, Professor of Neurology and Pediatrics, Children's Hospital of Philadelphia, University of Pennsylvania, BanwellB@email.chop.edu
Chitnis Tanuja	Associate Professor of Neurology, Harvard Medical School, Director, Partners Pediatric Multiple Sclerosis Center, Massachusetts General Hospital, Boston, USA, tchitnis@rics.bwh.harvard.edu
Chrousos George	Professor of Pediatrics, Head of the 1st Paediatric Clinic, "Agia Sofia", Children's Hospital, Athens National and Kapodistrian University, chrousge@med.uoa.gr
Dalakas Marinos	M.D., FAAN, Professor of Neurology, National and Kapodistrian University of Athens Medical School, Athens Greece, And Professor of Neurology, Department of Neurology, Thomas Jefferson University, Philadelphia, PA, USA, mdalakas@med.uoa.gr
Ghezzi Angelo	Ospedale di Gallarate, Centro Studi Sclerosi Multipla, Gallarate, angelo.ghezzi@aogallarate.it
Kappos Ludwig	Chair Neurology, University Hospital, Basel, Switzerland, lkappos@uhbs.ch ; EBeregj@uhbs.ch
Karussis Dimitrios	MD, PhD, Head of the MS Center at Hadassah, Department of Neurology, Jerusalem, Israel, dimitriosk@ekmd.huji.ac.il
Theoharides Theoharis	MS, PhD, MD, FAAAAI, Professor of Pharmacology and Internal Medicine Director, Molecular Immunopharmacology and Drug Discovery, Department of Integrative Physiology and Pathobiology, Tufts University School of Medicine, theoharis.Theoharides@tufts.edu
Anagnostouli Maria	Assistant Professor of Neurology-Neuroimmunologist Dept. of Demyelinating Diseases & Director of Immunogenetics Laboratory A' Neurological Clinic, Aeginition Hospital, National and Kapodistrian University of Athens, managnost@med.uoa.gr
Artemiadis Artemios	MD, MSc, Neurology Resident, 417 Army Share Fund Hospital, Research Associate, Medical School of Athens, kmwartem@yahoo.com
Vartzelis George	Lecturer in Pediatrics Neurology, Second department of Academic Pediatrics, Athens Medical School, University of Athens, yioran@yahoo.com
Youroukos Sotirios	Pediatric Neurologist, sotel@hol.gr
Gika Artemis	MD MSc PhD MRCPCH CCT(UK), Consultant Pediatric Neurologist, Scientific Associate, 1st Department of Pediatric, University of Athens, Greece, adgika@doctors.org.uk
Katsavos Serafim	MD, Consultant Neurologist, Dept of Neurology, Hellenic Airforce General Hospital, serafkatsavos@yahoo.gr
Katsarou Efi	Consultant Child Neurologist, Children's Hospital of Athens, P. & A. Kyriakou, pectasid@otenet.gr

Konitsiotis Spyros	Associate Professor of Neurology, skonitso@gmail.com
Mastroiyanni Sotiria	Consultant Child Neurologist, Children's Hospital of Athens, P. & A. Kyriakou, smastr@otenet.gr
Mitsikostas Dimos-Dimitris	MD, PhD, Athens Naval Hospital, Neurology Department Chief, dimosmitsikostas@me.com
Moschos Marilita	Assistant Professor, 1st Department of Ophthalmology, University of Athens, moschosmarilita@yahoo.fr
Ntinopoulos Argyrios	Assistant Professor Child Neurologist, argydino@gmail.com
Papavasilou Antigone	MD, FAAP, Head, Department Hospital, Athens, Greece, theon@otenet.gr
Papadimitriou Alexandros	Emeritus Professor of Neurology, School of Medicine, University of Thessaly, Chairman of Neurological Department, Henry Dunant Hospital Center. alexpapadimitriou@yahoo.com
Papatzikis Efthimios	Researcher/Lecturer in Educational Neuroscience, BMusEd, MMus, PhD, Prof.Cert.Ed., NeuroCert. FHEA, QTS, efp331@mail.harvard.edu
Pons Rozer	Pediatric Neurologist, First Department of Pediatrics, University of Athens Children's hospital Agia Sofia roserpons@med.uoa.gr
Stefanis Leonidas	Professor of Neurology, Director of B'Dept. of Neurology, "ATTIKON" Hospital, Director of Laboratory for Neurodegenerative Diseases, Institute for Biomedical Research, Academy of Athens, lstefanis@bioacademy.gr
Toulas Panagiotis	Consultant Neuroradiologist, MDDirector of Imaging Dept, Encephalos-EuromedicaScientific Fellow, EKPA, ptoulas@yahoo.gr
Tsitsami Helen	MD, PhD, Head of Pediatric Rheumatology Unit, First Department of Pediatrics, School of Medicine, University of Athens, Children's Hospital Aghia Sophia, Athens, Greece, elena@tsitsamis.gr
Fakas Nikolaos	MD, PhD, Neurologist, Head of Neurology Department 401 General Military Hospital of Athens, drfakas@yahoo.gr
Christidi Fotini	Clinical Neuropsychologist, MSc, PhD candidate, Scientific Associate, A' Department of Neurology, Aeginition Hospital, Medical School, National & Kapodistrian University, Athens, Greece, christidi.f.a@gmail.com
Orologas Anastasios	MD, PhD, Professor of Neurology, Aristotle University of Thessaloniki, Head, A' University Dept., of Neurology, AHEPA Hospital, Thessaloniki, Greece, orologas@med.auth.gr



GENERAL INFORMATION

Congress Venue

Royal Olympic Hotel
28-34 Athanasiou Diakou Str.
117 43, Athens, GREECE
Tel.: +30 210 92.88.400

Dates

16-18 January 2014

Language

The official language of the Congress is Greek
Bilingual translation will be provided

Registration Cost

Doctors	100€
Junior Doctors	Free
Nurses/ Technicians	Free
Medical Students	Free

Congress Secretariat



E.T.S. Events & Travel Solutions A.E.

154 El. Venizelou Str., N. Smyrni,

Athens, Greece, 171 22

Tel.: +30 210 98 80 032,

Fax.: +30 210 98 81 303

E-mail: ets@events.gr, ets@otenet.gr,

Website: www.events.gr

Cover artwork:

Spyros Poulimenos