

2nd INTERDISCIPLINARY CONGRESS
ON PEDIATRIC AND ADOLESCENT MULTIPLE SCLEROSIS

«Dialogues of Hellenic Neuroscientists
on Pediatric and Adolescent
Multiple Sclerosis»

25-27
November
2016

Athenaeum
Intercontinental
ATHENS

Organization:

George Chrousos
Professor of Pediatrics
National and Kapodistrian University of Athens

Maria Anagnostouli
Assistant Professor of Neurology
National and Kapodistrian University of Athens



Under the auspices of:

- Medical School of Athens
- Institute of Stress's
Biology and Medicine



CME - CPD
14 credits
will be
provided



ABSTRACT BOOK
& FINAL PROGRAMME

INVITATION OF THE PRESIDENTS OF SCIENTIFIC AND ORGANIZING COMMITTEE

Dear colleagues, dear students,

Multiple Sclerosis (MS) is a disease that affects people of all ages, but especially the young. A small percentage of all patients, about 3-5%, concerns individuals in childhood and adolescence.

The great interest of medical and nursing staff, as well as of students and the public at large, was expressed in their active participation during the 1st Panhellenic Congress of Childhood and Adolescent MS that took place in Athens last January 2015. In that congress speakers of major international repute and scope were invited and the results of the meeting were most fruitful. This success led us to organize the 2nd Panhellenic Congress on the same subject this year.

This year is an anniversary year, as our congress is the fifth interdisciplinary meeting of the annual series "Dialogues of Greek Neuroscientists" launched in 2011. Therefore, this year we have included in the scientific program, small modules of earlier themes, such as the Neuroaesthetics and Immunogenetics of MS, etc.

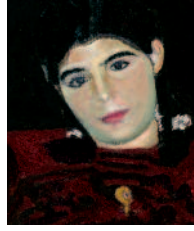
We strongly believe in interdisciplinarity. We also firmly believe in the participation and active involvement of deserving young scientists to such scientific meetings, and strive with all our might to prevent the current "brain drain" from Greece. With the conviction that this scientific meeting opens new avenues of interdisciplinary approaches to MS and stimulates collaboration among different biomedical specialties with the ultimate goal to optimize the treatment of children and adolescents with this disease, we invite you to come to Athens and participate actively in our meeting.

We are looking forward to having you with us.

George P. Chrousos
Professor and Chair,
First Dept. of Pediatrics

Maria Anagnostouli
Assistant Professor of Neurology

National and Kapodistrian University of Athens



COMMITTEES

PRESIDENT OF THE SCIENTIFIC COMMITTEE

Chrousos George

PRESIDENT OF THE ORGANIZING COMMITTEE

Anagnostouli Maria

SCIENTIFIC COMMITTEE

Dalakas Marinos
Kappos Ludwig
Stefanis Leonidas
Orologas Anastasios
Zafeiriou Dimitrios

ORGANIZING COMMITTEE

Papavasiliou Antigone
Tzoufi Meropi
Katsarou Efi
Voudris Konstantinos
Mastroyianni Sotiria
Ntinopoulos Argyrios
Pons Roser
Vartzelis George

HONORARY COMMITTEE

Papadimitriou Alexandros
Papathanasopoulos Panagiotis
Kyritsis Athanasios
Piperidou Charitomeni
Hadjigeorgiou George
Heliopoulos Ioannis
Amiridis George
Nikolaou Chrysoula
Kapaki Elisabeth

Grigoriadis Nikolaos
Kilidireas Constantinos
Voumvourakis Constantinos
Triantafyllou Nikolaos
Mitsikostas Dimos
Konitsiotis Spyridon
Chatzipanagiotou Stylianos
Deretzi Georgia
Pelidou Erietta

ARTISTIC COMMITTEE

Zeki Semir, Giouroukos Sotiris, Poulimenos Spyros

SCIENTIFIC PROGRAMME

FRIDAY 25 NOVEMBER 2016

11.30am - 12.00pm	Registrations
12.00pm - 12.30pm	Welcome Addresses Presidents of Organizing and Scientific Committees
12.30pm - 13.30pm	Round Table <i>Chair: Chrousos G., Anagnostouli M.</i>
12.30pm - 13.00pm	<u>Anagnostouli M.</u> "Interdisciplinary Meetings entitled: "Dialogues of Hellenic Neuroscientists". 5 years process"
13.00pm - 13.30pm	<u>Chrousos G.</u> "Institute of Stress Biology and Medicine. Introduction of a newly established scientific society on the biology and medicine of stress and the example of stress-influenced autoimmune diseases"
13.30pm - 14.30pm	Pediatric and Adolescent MS. Cardiological-Angiological data. Nursing care. <i>Chair: Chatzipanagiotou S., Theotoka Il.,</i>
13.30pm - 14.00pm	<u>Gialafos Il.</u> "Cardiological-Angiological data in MS. The impact on therapeutical choices"
14.00pm - 14.30pm	<u>Chrysovitsanou Ch.</u> "Care and support of children and adolescents with MS"
14.30pm - 15.00pm	Coffee Break
15.00pm - 16.30pm	Pediatric and Adolescent MS. Epidemiological, pathophysiological and clinical data <i>Chair: Katsarou E., Tzoufi M.</i>
15.00pm - 15.30pm	<u>Ntinopoulos A.</u> "Epidemiological, genetic and immunogenetic data"
15.30pm - 16.00pm	<u>Mastroianni S.</u> "Clinical, imaging and laboratorial data"
16.00pm - 16.30pm	<u>Pons R.</u> "Pathophysiological and therapeutical data"
16.30pm - 17.00pm	Coffee Break
17.00pm - 19.30pm	Neuroaesthetics – Neuroschediastics and childhood <i>Chair: Chrousos G., Papadimitriou A.</i>
17.00pm - 17.30pm	<u>Sotiropoulos M.</u> "Introduction in Neuroaesthetics-Interaction with medicine"
17.30pm - 18.00pm	<u>Rossiyou E.</u> "Art and Psychiatry"
18.00pm - 18.30pm	<u>Anagnostouli M.</u> "Neuroaesthetics and Neuroschediastics. Focus on childhood"
18.30pm - 19.30pm	<u>Zeki S.</u> "The distinction between biological and artefactual categories in neuroaesthetics studies during childhood"
19.30pm - 20.30pm	Opening Ceremony



SATURDAY 26 NOVEMBER 2016

09.00am - 10.30am	Pediatric and Adolescent MS – Differential Diagnosis <i>Chair: Papavasileiou A., Orologas A.</i>
09.00am - 09.30am	<u>Voudris K.</u> “ADEM and Pediatric MS”
09.30am - 10.00am	<u>Kotsalis Ch.</u> “Devic and Pediatric MS”
10.00am - 10.30am	<u>Theodorou V.</u> “Autoimmune encephalitis and Pediatric MS”
10.30am - 11.00am	Coffee break
11.00am - 12.00pm	Satellite Symposium Sponsored by  <i>Chair: Anagnostouli M., Karageorgiou K.</i> <u>Anagnostouli M.</u> “DMF in clinical practice” <u>Karageorgiou K.</u> “Intercepting the progress of MS in highly active patients”
12.00pm - 13.30pm	Optical Neuritis in childhood/adolescence <i>Chair: Orologas M., Moschos M.</i>
12.00pm - 12.30pm	<u>Besinis D.</u> “Pathophysiology of optical neuritis”
12.30pm - 13.00pm	<u>Toulas P.</u> “The conventional and non-conventional neuro-imaging methods in the differential diagnosis of MS in children and adolescents. Focus on the optic nerves”
13.00pm - 13.30pm	<u>Moschos M.</u> “Optic neuritis in children and adolescents with MS and other demyelinating diseases. Therapeutical approaches”
13.30pm - 15.30pm	Lunch Break
15.30pm - 16.30pm	Satellite Lecture Sponsored by  <i>Chair: Anagnostouli M.</i> <u>Houliara V.</u> “Newest data for pediatric MS and pregnancy. The role of S1P receptors ”
16.30pm - 18.00pm	Meet the expert - Presentation of Pediatric/ Adolescent MS cases <i>Chair: Anagnostouli M., Ghezzi A</i> Commentators: <u>Dalakas M.</u> , <u>Kappos L.</u> , <u>Banwell B.</u> , <u>Chitnis T.</u>
18.00pm - 18.30pm	Coffee Break
18.30pm - 20.00pm	Therapies in Pediatric and Adolescent MS <i>Chair: Dalakas M., Zafeiriou D.</i>
18.30pm - 19.00pm	<u>Chitnis T.</u> “First line therapies in pediatric MS. New insights”
19.00pm - 19.30pm	<u>Banwell B.</u> “ Second line therapies in pediatric MS. Where are we now?”
19.30pm - 20.00pm	<u>Kappos L.</u> “Recent controlled and observational studies in MS- Implications for pediatric MS treatment trials and practice.”

20.00pm - 21.00pm	State of the art lectures <i>Chair: Chrousos G., Papadimitriou A.</i>
20.00pm - 20.30pm	<u>Gravanis A.</u> "Synthetic neurotrophins in demyelination: their role in the neuroprotection and neuroregeneration"
20.30pm - 21.00pm	<u>Dalakas M.</u> "B cells and MS therapeutics"
21.00pm	Awards of photographic work of children and adolescents with MS

SUNDAY 27 NOVEMBER 2016

09.00am - 10.30am	Round table: Students from Medical School of Athens <i>Chair: Anagnostouli M., Gontika M.</i> <u>Tsimpiktsioglou A.</u> "Epidemiology on Pediatric and Adolescent MS. The role of environmental factors" <u>Saliaris K.</u> "Immunogenetics of Pediatric and Adolescent MS. Implication in personalized therapeutics" <u>Efthymiou K.</u> "Pathophysiology of Pediatric and Adolescent MS" <u>Panagiotopoulos NA</u> "Diagnostic assessment in Pediatric and Adolescent MS." <u>Malli A.</u> "Therapy of Pediatric and Adolescent MS. Personalized approach"
10.30am - 11.00am	Coffee Break
11.00am - 12.30pm	The Microbiome and the role of nutrition and dental health in Pediatric and Adolescent MS <i>Chair: Voudris K., Pervanidou N.</i>
11.00am - 11.30am	<u>Pervanidou N.</u> "Microbiome and stress in autoimmune diseases and pediatric MS"
11.30am - 12.00pm	<u>Ioannidis A.</u> "Microbiome and targeted therapeutics in childhood MS: A laboratory approach"
12.00pm - 12.30pm	<u>Chatzinikolaou Ch.</u> "Dental/oral health in patients with MS"
12.30pm - 13.00pm	Coffee break
13.00pm - 14.30pm	Cognitive Implications in pediatric MS <i>Chair: Mastroianni S., Zalonis I.</i>
13.00pm - 13.30pm	<u>Gontika M.</u> "On HLA system and other genetic parameters of cognitive implications in pediatric MS"
13.30pm - 14.00pm	<u>Artemiadis A.</u> "The role of the Volumetric Conventional Magnetic Resonance Imaging Analysis (MRI) of the Brain in Pediatric and Juvenile Multiple Sclerosis"
14.00pm - 14.30pm	<u>Skarlis Ch.</u> "The role of melatonin and sleep in pediatric MS"
14.30pm - 15.00pm	Conclusions – Discussion – End of the Congress



SPEAKERS-CHAIRPERSONS

(in alphabetical order)

Banwell Brenda	MD, Division Chief, Neurology, Professor of Neurology and Pediatrics, Children's Hospital of Philadelphia, University of Pennsylvania, BanwellB@email.chop.edu
Chitnis Tanuja	Associate Professor of Neurology, Harvard Medical School, Director, Partners Pediatric Multiple Sclerosis Center, Massachusetts General Hospital, Boston, USA, tchitnis@rics.bwh.harvard.edu
Chrousos George	Professor and Chairman of Pediatrics, 1st Dept. of Paediatrics, "Agia Sophia" Children's Hospital, National and Kapodistrian University of Athens, chrousge@med.uoa.gr
Dalakas Marinos	MD, FAAN, Professor of Neurology, National and Kapodistrian University of Athens Medical School, Athens Greece, And Professor of Neurology, Department of Neurology, Thomas Jefferson University, Philadelphia, PA, USA, mdalakas@med.uoa.gr
Ghezzi Angelo	Ospedale di Gallarate, Centro Studi Sclerosi Multipla, Gallarate, angelo.ghezzi@asst-valleolona.it
Kappos Ludwig	Chair Neurology, University Hospital, Basel, Switzerland, Kappos-lu@usb.ch
Zeki Semir	Neurobiologist, University College, London, UK, s.zeki@ud.ac.uk
Anagnostouli Maria	Assistant Professor of Neurology-Neuroimmunologist Demyelinating Diseases Clinic & Director of Immunogenetics Laboratory 1 st Dept. of Neurology, Aeginition Hospital, National and Kapodistrian University of Athens, managnost@med.uoa.gr
Artemiadis Artemios	MD, MSc, Neurology Resident, 417 Army Share Fund Hospital, Research Associate, Medical School of Athens kmwartem@yahoo.com
Voudris Konstantinos	Consultant, Neurology Department, Children Hospital "P&A Kyriakou", Athens, voudrisk@otenet.gr
Gialafos Elias	Cardiologist, Scientific Consultant, Aeginition Hospital, gialaf@yahoo.com
Gontika Maria	Neurology Resident, Department of Neurology, General Hospital "Evangelismos", PhD Candidate Medical School of Athens, National Kapodistrian University of Athens, mary212009@windowslive.com
Gravanis Achilleas	Professor of Pharmacology, Medical School, University of Crete, Researcher of Foundation for Research and Technology - Hellas (FORTH), gravanis@med.uoc.gr
Efthymiou Konstantinos	Student, 5 th year, Medical School, National Kapodistrian University of Athens, constantinus7@hotmail.gr
Theodorou Virginia	Neurologist- Pediatric Neurologist, Director Neurological Department, Children's Hospital of Athens, "Agia Sophia", vitheodorou@yahoo.gr
Theotoka Ilia	Dr, Clinical Psychologist – Psychotherapist, Psychiatric Clinic, Aeginition Hospital, iliatheotoka@yahoo.com

SPEAKERS-CHAIRPERSONS

(in alphabetical order)

Zalonis Ioannis	Neuropsychologist, Assistant Professor, Social Medicine, Psychiatry and Neurology, Medical School National Kapodistrian University of Athens, zalonis@eginitio.uoa.gr
Zafeiriou Dimitrios	Professor Pediatric Neurology-Auxology, Aristotle University of Thessaloniki, Auxology Centre «A Fokas», General Hospital of Thessaloniki. «Ippokrateio», zafeiriou@icloud.com
Ioannidis Anastasios	Assistant Professor Microbiology, University of Peloponnese, tasobi@uop.gr
Karageorgiou Klimentini	Neurologist – Psychiatrist MD, PhD, Director Neurological Clinic, Iatriko Athens, klikarag@hotmail.com
Katsarou Efi	Director Neurological Department Pediatric Hospital «P & A Kyriakou», efipec@gmail.com
Kotsalis Haris	Neurologist - Pediatric Neurologist, Director, Pediatric Neurology Clinic Pendeli's Children's Hospital, hkotsal@yahoo.gr
Malli Antonia	Student, 6 th year, Medical School, National Kapodestrian University of Athens, antoniamalli@hotmail.com
Mastroianni Sotiria	Consultant Child Neurologist, Neurological Dpt, Children's Hospital of Athens, "P. & A. Kyriakou", smastr@otenet.gr
Moschos Marilita	Associate Professor, 1 st Department of Ophthalmology, University of Athens, moschosmarilita@yahoo.fr
Besinis Dimitrios	Ophthalmic Eye Surgeon, Glaucoma Fellow M.Sc. Ph.D. FEBOPhth, The Hillingdon Hospitals NHS Foundation Trust, Uxbridge, Greater London, UK, Western Eye Hospital, Imperial College Healthcare NHS Trust, London, UK, dibessinis@gmail.com
Ntinopoulos Argyrios	Associate Professor Pediatric Neurology, 3 rd Pediatric Clinic, Univerity Hospital «Attikon», argydino@gmail.com
Panagiotopoulos Nikitas-Apollon	Student, 6 th year, Medical School, National Kapodestrian University of Athens, panagiotopoulos.nikitas@hotmail.com
Papavasileiou Antigoni	Pediatric Neurologist, Head of Pediatric Neurology Clinic, Paidon Pentelis Hospital, theon@otenet.gr
Papadimitriou Alexandros	Emeritus Professor of Neurology, School of Medicine, University of Thessaly, Chairman of Neurological Department, Henry Dunant Hospital Center, alexpapadimitriou@yahoo.com
Pervanidou Neni	Assistant Professor Pediatric, National Kapodestrian University of Athens, A' Pediatric Clinic, Children Hospital, "Agia Sophia" ppervanid@med.uoa.gr
Pons Roser	Assistant Professor Pediatric Neurology, A' University Pediatric Clinic, National Kapodestrian University of Athens, Children's Hospital "Agia Sophia", roserpons@med.uoa.gr
Rossioui Eleni	Historian of Art, elenarossioui@yahoo.gr
Saliaris Konstantinos	Student, 3 rd year, Medical School, National Kapodestrian University of Athens, konstantinossaliaris@gmail.com



- Skarlis Charalampos** Pharmacist, Candidate PhD at Immunogenetics Laboratory, 1st Dept. Of Neurology, National Kapodestrian University of Athens, Aeginition Hospital, charalampos.skarlis@student.unife.it
- Sotiropoulos Marinos** Student, 3rd year, Medical School , National Kapodestrian University of Athens, marinos@mail.com
- Tzoufi Meropi** Pediatricist-Pediatric Neurologist, Associate Professor, Child's Health, Medical School, University of Ioannina, Member of Greek Parliament, Ioannina, SYRIZA, mtzoufi@gmail.com
- Toulas Panagiotis** Consultant Neuroradiologist, Director of Imaging Department, Vioatriki, National Kapodistrian University of Athens, ptoulas@yahoo.gr
- Tsimpiktsioglou Athina** Student, 3rd year, Medical School, National Kapodestrian University of Athens, athina.tsimpik@yahoo.gr
- Chatzinikolaou Charitomeni** Surgeon Dentist, Scientific Consultant 1st Dept. of Neurology, National and Kapodistrian University, Aeginition Hospital xnmeni@hotmail.com
- Chatzipanagiotou Stylianos** Associate Professor of Microbiology, National Kapodestrian University of Athens, Microbiology Laboratory, Aeginition Hospital, schatzi@med.uoa.gr
- Houliara Vassiliki** 1st Attending Physician, Neurology Clinic of Nikaia General Hospital, vasso6789@gmail.com
- Chrysovitsanou Chryssa** PhD, R.N., MSc, MSN, Multiple Sclerosis Clinic, Aeginition Hospital, National and Kapodistrian University of Athens, School of Medicine Athens, chrysachrysovitsan@gmail.com
- Orologas Anastasios** Professor of Neurology, Aristotle University of Thessaloniki, Director A' Neurological Clinic, University Hospital AHEPA, Thessaloniki, orologas@med.auth.gr

25-27
November
2016

ATHENAEUM
INTERCONTINENTAL
ATHENS

GENERAL INFORMATIONS

Congress Venue

Athenaeum Intercontinental Hotel
Syggrou Avenue 89-93
Tel: 0030 210 920 6000

Dates

25-27 November 2016

Language

The official languages of the Congress is Greek and English

Registration Cost

Doctors	80€ (daily registration cost 30€)
Junior Doctors	Free
Nurses/Technicians	Free
Medical Students	Free
Biologists/Psychologists	Free

Congress Secretariat



E.T.S. Events & Travel Solutions A.E.
154 El. Venizelou Str., 17122 N. Smyrni,
Athens, Greece
Tel: 210-98 80 032, Fax: 210-98 81 303
E-mail: ets@otenet.gr, ets@events.gr
Website: www.events.gr

Cover artwork:

Spyros Poulimenos